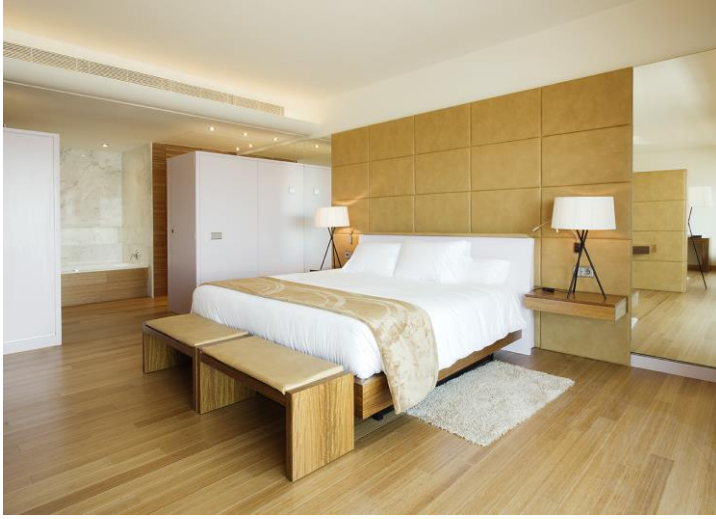


Bamboo Flooring VERTICAL

Our "Vertical" parquet floors are made from vertically assembled bamboo strips, giving them a contemporary, refined look. The planks are factory-finished with either a matte UV varnish or a matte Woca® oil finish. The quality of our products enables us to offer a warranty of up to 30 years, provided they are installed in accordance with our instructions, in compliance with local standards and following our maintenance recommendations.



Available colors:



Reference	Coating ¹	Color	Glued pose	Floating pose	Floor-heating ³	Bathroom ³	Dimensions (mm)	Wear Layer (mm)	Structure	Bevel	Inter-locking ²	Content box
F12VCC96	V	Caramel	✓	✓	✓	✓						
F12VCC96	V	Champagne	✓	✓	✓	✓						
F12VOCH96	H	Champagne	✓	✓	✓	X	12x96x960	±4,4	Solid	GO2	R/L	2,76m ² 23kg
F12VCG96	V	Gold	✓	✓	✓	✓						
F12VOC96	H	Caramel	✓	✓	✓	X						
F7SVCC128	V	Caramel	✓	✓	✓ ⁶	✓	10x128x960	±1	BSPC	mini	Click	1,47m ² 19kg
F10VCC128	V	Caramel	X	✓	X	X	10x128x960	±2,5	HDF	GO2	Click	1,47m ² 14,4kg
F15VCC150	V	Caramel	✓	✓	✓	✓	15x150x1940	±5	3 crossed layers bb	GO2	R/L	2,33m ² 24kg
F15VCN150	V	Naturel	✓	✓	✓	✓						
F15VCC190	V	Caramel	✓	✓	✓	✓						
F15VCG190	V	Gold	✓	✓	✓	✓	15x190x2200	±4	Multiply	GO2	R/L	3,34m ² 26kg
F15VOCH190	H	Champagne	✓	✓	✓	X						

¹ V= varnish / H= oil

² T/G = Tongue/Groove

³ In the case of floating installation with tongue and groove, the tongues and grooves must be glued.

⁴ Ideally, underfloor heating systems should be glued down. A floating installation creates an insulating layer of air that reduces the performance of the underfloor heating system.

⁵ Bathroom installation **must be glued** (except for BSPC). Extreme care must be taken to ensure a watertight seal around the perimeter.

⁶ BSPC can be installed on underfloor heating as a floating system, but is not recommended (see point 4 above).

Installation tips are available on our website www.bambootouch.com/en/advice







Storage, installation and maintenance (DTU 51.2 or local standard)

- Planks should be stored horizontally at a temperature of 15 to 25°C and relative humidity of 45 to 65 %.
- The flooring requires acclimatization and will be left 48h in its open packaging on the place of installation.
- Bamboo is a natural product. Variations in color, grain or shine are normal. Be sure to mix the planks from different packages before installation. **All installed flooring will be considered accepted.**
- The screed must be dry, clean and even. The moisture content, evenness and load-bearing capacity of the screed must be in accordance with current standards. Residual moisture must not exceed 2.7%.
- Allow for an expansion gap of +/- 1 cm around the floor and obstacles.
- Provide a divider joint every 8 to 10m.
- Installation, cleaning and maintenance instructions are available on our website www.bambootouch.com/en/advice.

Caractéristiques techniques

- Brinell hardness: ±4,3 kg/mm² (EN 1534 – CTIB 5229/2)
- Contraction coefficient: 0,14% per % of humidity variation
- Humidity level : 10% at 20° and 65% of relative humidity
8% at 20° and 50% of relative humidity
- Density : ±740 kg/m³
- Fire standard : CFLS1 if glued pose (BFLS1 for some products)
- Formaldehyde emissions: 0,04mg/m²h (EN 717-2 CTIB 5229/2)
- PCP level : below detection limit (CTIB 5229/2)
- VOC Free : below detection limit (EN15052 CTIB 5229/2)
- Thermal resistance : 0,05m²K/W (EN12664 CTIB 5229/2)
- Thermal conductivity : 0,20W/mK
- Warranty: up to 30 years under conditions (see our website)

Accessories for varnished parquet

		Caramel	Naturel	Dimensions
Wallbase/Stairnose		AWB15VCC88	AWB15VCN88	15 x 88 x 1860 mm
Wallbase 50mm		AWB15VCC50		14 x 50 x 1860 mm
¼ round		AQR15VCC15	AQR15VCN15	15 x 15 x 1860 mm
Stairnose round			ASN15VCN92	15 x 92 x 1860 mm
Reducer		ARE14VCC56	ARE15VCN56	14 x 56 x 1860 mm
T-profile		ATM15VCC50		15 x 50 x 1860 mm

Accessories for oiled parquet

		Caramel	Champagne	Dimensions
Wallbase/Stairnose		AWB15VOC88		15 x 88 x 1860 mm
Wallbase 50mm			AWB15VOCH50	15 x 50 x 1860 mm
¼ round			AQR15VOCH15	15 x 15 x 1860 mm
Reducer		ARE15VOC56		14 x 56 x 1860 mm